

# Detector Not Connected?



If your Detector is Tethered, please locate your SCU Box and **Power Cycle** it. →



For Wireless Detectors:

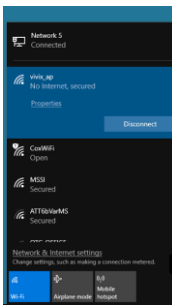
1) Try clicking on the **Detector Icon** in Exposure Mode to reconnect.



## Is the Detector in AP Mode?

2) Verify if **AP Mode** is ON (Blue LED or "AP Mode" if there is a Display Window on the detector)

3) Press AP Button to turn on AP Mode if necessary

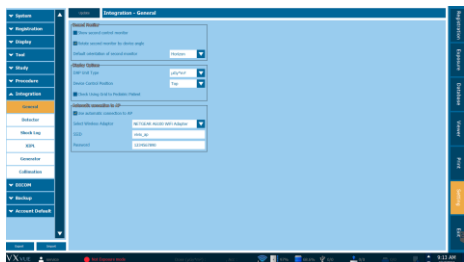


## Does the Wireless connection show up in the WiFi list?

Default SSID is "vivix\_ap"

4) Click **Connect** if necessary

5) Power Cycle Detector if necessary



Making sure VxVue is configured to **Autoconnect to AP** may help with this issue in the future.

You can find this setting in:

Settings>Integration>General>"Use Automatic Connection to AP"

Give us a Call